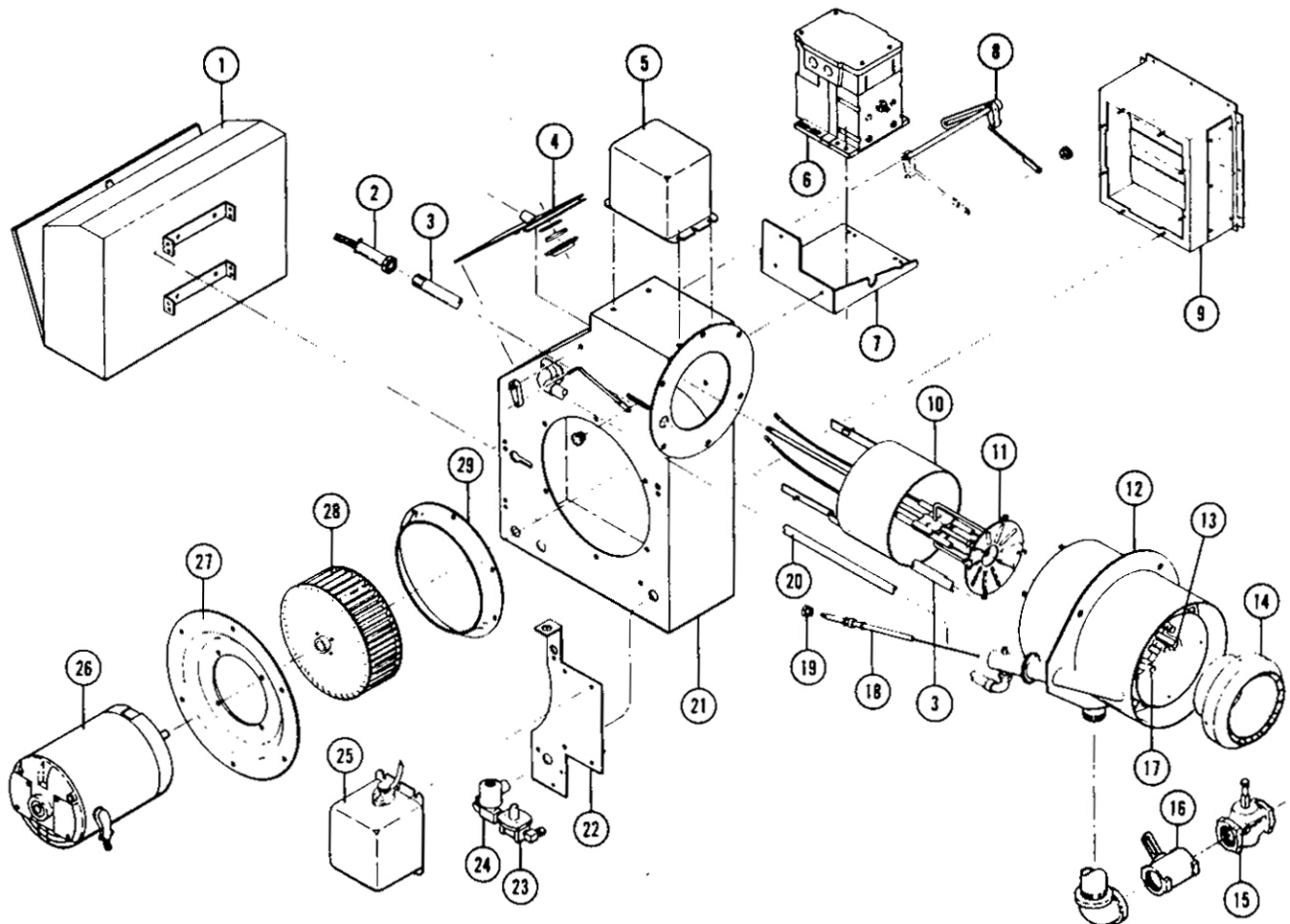


TYPICAL S10 or S12 GAS-OIL BURNER

NOTE

SEE PART IV FOR GAS SYSTEM COMPONENTS, PART V FOR OIL SYSTEM COMPONENTS AND PART VI FOR COMBUSTION CONTROLS



① CONTROL CABINET

② FLAME DETECTOR

③ FLAME DETECTOR TUBE

④ BACK PLATE ASSEMBLY

⑤ OIL IGNITION TRANSFORMER
<IF USED>

⑥ MODULATING MOTOR

⑦ MODULATING MOTOR
MOUNTING BRACKET <IF USED>

⑧ MODULATING PRIMARY AIR
CYLINDER LINKAGE ASSEMBLY

⑨ AIR INLET ASSEMBLY

⑩ PRIMARY AIR CYLINDER

⑪ OIL DRAWER ASSEMBLY
• AIR DIFFUSER
• OIL NOZZLE
• OIL NOZZLE ADAPTER
• OIL IGNITION ELECTRODES
<IF USED>
• MAIN FUEL TUBE
• IGNITION CABLES <IF USED>

⑫ COMBUSTION HEAD

⑬ PRIMARY GAS ORIFICES
<OUTER RING>

⑭ SWIRLER

⑮ LEAK TEST VALVE

⑯ BUTTERFLY GAS VALVE

⑰ SECONDARY GAS ORIFICES
<INNER RING>

⑱ 216C GAS PILOT
ELECTRODE ASSEMBLY

⑲ 216C PILOT PACKING NUT

⑳ PILOT AIR TUBE

㉑ BURNER HOUSING

㉒ TRANSFORMER MOUNTING
BRACKET

㉓ PILOT GAS PRESSURE
REGULATOR

㉔ PILOT SOLENOID VALVE

㉕ GAS PILOT IGNITION
TRANSFORMER

㉖ BLOWER MOTOR

㉗ MOTOR MOUNTING PLATE

㉘ BLOWER WHEEL

㉙ AIR INLET CONE